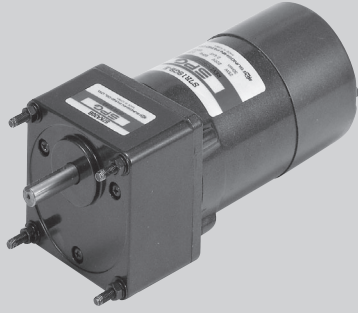


Powermec



15W

ELECTROMAGNETIC BRAKE MOTOR

□ 70mm LEAD WIRE TYPE

SIZE mm sq.	Type	Poles	Output (W)	Voltage (V)	Frequency (Hz)	Duty	Rated Load				Starting Torque		Capacitor (uF)
							Current (A)	Speed (rpm)	Torque (kg-cm) (N-m)		(kg-cm)	(N-m)	
70	S7R15GA-E S7R15GA-E(TP) S7R15GA-ECE	4	15	1 ∅ 110	60	30min.	0.46	1550	1.00	0.100	1.25	0.125	6.0
	S7R15GB-E S7R15GB-E(TP) S7R15GB-ECE	4	15	1 ∅ 220	60	30min.	0.23	1600	1.00	0.100	1.20	0.120	1.5
	S7R15GC-E S7R15GC-E(TP) S7R15GC-ECE	4	15	1 ∅ 100	50	30min.	0.44	1200	1.25	0.125	1.00	0.100	6.0
	60				0.44		1500	1.00	0.100	1.00	0.100		
	S7R15GD-E S7R15GD-E(TP) S7R15GD-ECE	4	15	1 ∅ 200	50	30min.	0.22	1250	1.25	0.125	1.00	0.100	1.5
	60				0.22		1550	1.00	0.100	1.00	0.100		
	S7R15GE-E S7R15GE-ECE	4	15	1 ∅ 100	50	30min.	0.38	1250	1.25	0.125	1.00	0.100	6.0
	60				0.41		1550	1.00	0.100	4.5			
	60				0.34		1600	1.00	0.100	4.5			
	S7R15GX-E S7R15GX-ECE	4	15	1 ∅ 220	50	30min.	0.17	1200	1.25	0.125	1.00	0.100	1.2
	1 ∅ 240						0.18		1.45	0.145	1.20	0.120	

- ❖ S7R15GE-E is UL approved(UL FILE NO. E172720) thermally protected type.
- ❖ Appropriate capacitors shall be used according to the voltage for S7R15GE-E type since the size of the capacitor differs by different voltages. Malfunction may occur when not used properly. Capacitor for 115V will be delivered otherwise the required voltage is informed.
- ❖ CE marked at the end of model name indicates that it is thermally protected type which has received CE, S7R15GE-ECE is available only for 115V specification.
- ❖ TP marked at the end of the model name indicates that it is standard motor with Thermal Protector mounted.
S7R15GE-E, S7R15GX-E is thermally protected type with TP mounted.
- ❖ Above data is measured with brake removed from electromagnetic brake motor.
- ❖ "L" or "H" type does not apply to motors under 40W.

50Hz

MODEL	GEAR RATIO	GEAR RATIO																							
		3	3.6	5	6	7.5	9	10	12.5	15	18	20	25	30	36	40	50	60	75	90	100	120	150	180	200
S7KA□B	rpm	500	416	300	250	200	166	150	120	100	83	75	60	50	41	37	30	25	20	16	15	12	10	8	7.5
	kg-cm	3.2	3.9	5.4	6.5	8.1	9.7	10.8	13.5	16.2	19.4	19.4	24.2	29.1	34.9	38.8	43.6	50.0	50.0	50.0	50.0	50.0	50.0	50.0	50.0
	N-m	0.314	0.382	0.530	0.637	0.794	0.951	1.059	1.324	1.587	1.902	1.902	2.373	2.854	3.423	3.805	4.276	4.900	4.900	4.900	4.900	4.900	4.900	4.900	4.900

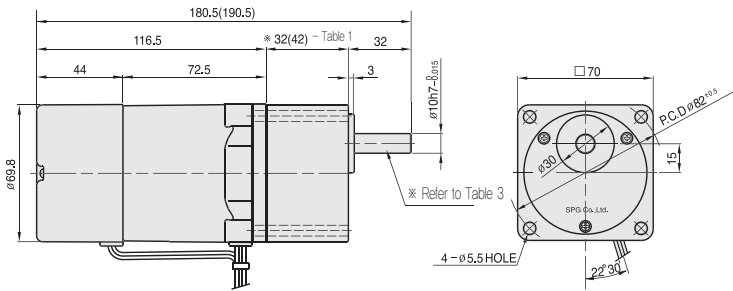
60Hz

MODEL	GEAR RATIO	GEAR RATIO																							
		3	3.6	5	6	7.5	9	10	12.5	15	18	20	25	30	36	40	50	60	75	90	100	120	150	180	200
S7KA□B	rpm	600	500	360	300	240	200	180	144	120	100	90	72	60	50	45	36	30	24	20	18	15	12	10	9
	kg-cm	3.0	3.6	5.1	6.1	7.6	9.1	10.1	12.7	15.2	18.2	18.2	22.8	27.3	32.8	36.5	41.0	49.2	50.0	50.0	50.0	50.0	50.0	50.0	50.0
	N-m	0.294	0.353	0.500	0.598	0.745	0.892	0.990	1.245	1.491	1.785	1.785	2.236	2.677	3.217	3.579	4.021	4.825	4.900	4.900	4.900	4.900	4.900	4.900	4.900

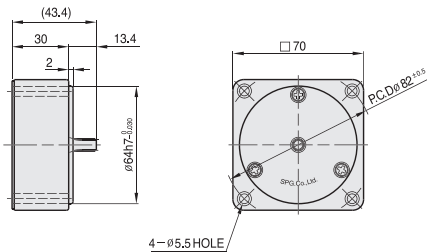
- ❖ The code in □ of gearhead model is for gear ratio.
- ❖ It is the permissible torque of the assembled motor and gearhead.
- ❖ The permissible torque of the motor and inter-decimal gearhead is 50 kg-cm.
- ❖ ■ color indicates that the output shaft of the geared motor rotates in the same direction as the output shaft of the motor.
Others indicate rotation in the opposite direction.
- ❖ Rpm is based on synchronous speed (50Hz: 1500rpm, 60Hz: 1800rpm) divided by gear ratio.
The actual rotation speed can be 2~20% less than displayed value depending on the load.
- ❖ "L" or "H" type does not apply to motors under 40W.

DIMENSIONS

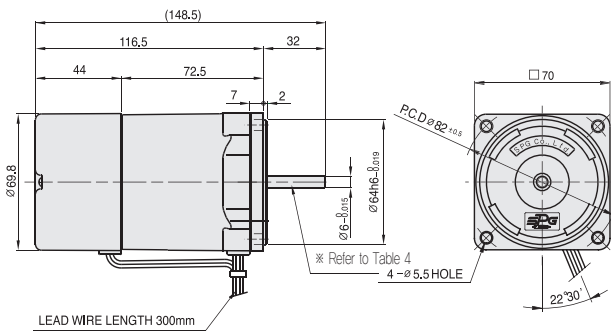
- GEARED MOTOR * MOTOR MODEL : S7156G□-E
* HEAD MODEL : S7□A3□-S7□A200□



- INTER-DECIMAL GEAR HEAD * MODEL : S7GX10B



- MOTOR * MOTOR MODEL : S7R15□□-E



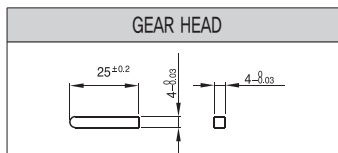
- *26(35) - (Table 1)

GEAR RATIO	SIZE(mm)
S7□A3□ ~ S7□A18□	32
S7□A20□ ~ S7□A200□	42

- WEIGHT - (Table 2)

PART	WEIGHT(kg)	
MOTOR	1.04	
DECIMAL GEAR HEAD	0.32	
GEAR HEAD	S7□A3□ ~ S7□A18□	0.38
	S7□A20□ ~ S7□A40□	0.47
	S7□A50□ ~ S7□A200□	0.52

- KEY SPEC



- SPEC for output shaft of gearhead - (Table 3)

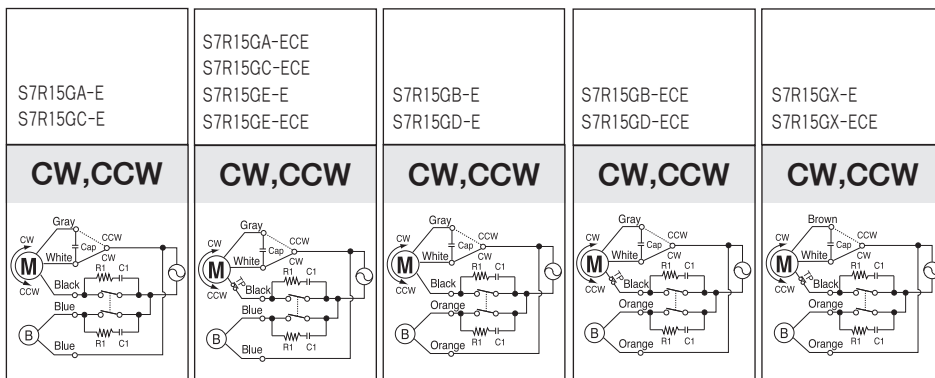
MODEL	TYPES OF OUTPUT SHAFT
STRAIGHT TYPE	
S7SA3□ ~ S7SA200□	
D-CUT TYPE	
S7DA3□ ~ S7DA200□	
KEY TYPE	
S7KA3□ ~ S7KA200□	

- SPEC for output shaft of motor - (Table 4)

MODEL	TYPES OF OUTPUT SHAFT
GEAR TYPE	
S7R15G□-E	
STRAIGHT TYPE	
S7R15S□-E	
D-CUT TYPE	
S7R15D□-E	

SCHEMATIC DIAGRAMS

The direction of motor rotation is as viewed from the front shaft end of the motor.



R1 = 10 ~ 200 Ω (Min. 1/4W)

C1 = 0.1 ~ 0.33 μF (AC125VV or AC250VV)